

# **Tonbridge and Malling**

## **Community Safety Partnership**

### **Annual Action Plan**

### **2011 - 2012**



## Contents

Introduction	Page 3
Key successes	Page 3
Review of projects and initiatives 2009 – 2010	Page 5
Priority Issues for 2011 – 2012	Page 9
Targets for the West Kent Police	Page 11
Action Plan 2011 – 2012	Page 12
Membership of the Community Safety Partnership and contact details	Page 20
Partnership meeting Structure	Page 21
Map of the Borough	Page 22

**If you have difficulty reading this document and would like the information in another format such as Braille, tape, CD or large print please call 01732 876132 or email [csp@tmbc.gov.uk](mailto:csp@tmbc.gov.uk)**

## **Action Plan 2011 - 2012**

### **Introduction**

Tonbridge and Malling Community Safety Partnership produces an annual Action Plan which sets out the actions that the Partnership will take to address crime and anti-social behaviour issues in the Borough over the coming year. The Action Plan is based on a Strategic Assessment that looks at current data and trends to address the priorities for the Borough in reducing and tackling crime and disorder.

The Community Safety Unit is now up and running and is providing a quicker response to residents and businesses that report anti-social behaviour or any community safety issues. It also engages Partners to work on a more multi-agency approach. Partnership working within the CSU will be further developed over the coming year.

The Community Safety Partnership has reviewed the number and type of meetings it holds every year with a view to focusing multi-agency working on priority issues and enhancing its response to new issues which arise through better use of the Partnership's tasking processes. A reduction in the overall number of meetings will result in less administration and will hopefully lead to more partners being engaged in the work of the Partnership over the year.

This year, following a national review, there will be no National Indicators to report on or confidence measures. However, the Partnership is keen to make sure that Tonbridge and Malling is one of the safest areas in Kent and residents and businesses feel that the Borough is a safe place to live and work. It will assess progress using local performance information where this is readily available.

## **Key successes 2010/11**

Crime levels within Tonbridge and Malling continue to fall and the Partnership is pleased with the successes it has achieved to ensure that residents and visitors can remain safe within the borough. From April 2010 to March 2011 crime levels within Tonbridge and Malling rose slightly by 3%, but remained the 10<sup>th</sup> lowest borough/district in the Council. As well as the low levels of crime, residents within the borough also felt the safest in Kent when asked how safe they felt in the daytime, walking alone.

Within the Action Plan for 2010/11 the Partnership set itself a number of targets and the table below illustrates how well the Partnership has done.

<b>Action/target</b>	<b>Baseline 2009/10</b>	<b>2010/11 target</b>	<b>2010/11 actual crimes</b>	<b>Percentage reduction/increase achieved</b>
Reduce domestic burglary by 5%	254	241	283	<b>+11%</b>
Reduce non domestic burglary by 5%	453	430	384	<b>-15.2%</b>
Reduce theft offences by 5%	932	885	1005	<b>+ 8%</b>
Reduce theft from vehicles by 5%	445	422	437	<b>- 2%</b>
Reduce theft of vehicles by 5%	131	124	164	<b>+25%</b>
Reduce fraud and forgery offences by 3%	191	185	226	<b>+18%</b>
Reduce criminal damage by 5%	1,267	1,204	1,243	<b>- 2%</b>
Reduce the number of violent crimes by 5%	1,105	1,050	1191	<b>+ 8%</b>
Reduce the number of first time entrants to the Criminal Justice System	130	N/A	129	<b>- 1</b>
Maintain the current levels of perception in relation to the number of people who consider drunk and rowdy behaviour to be a problem in their local area	9%	9%	7.5%	<b>+ 0.5%</b>
Maintain the levels of perception relating to drug dealing	8%	8%	7%	<b>+ 1%</b>
Reduce the percentage of repeat victims of domestic abuse to 20%	23%	20%	24%	<b>+ 2%</b>

## **Review of projects and initiatives against 2010/11 priorities**

During 2010/11 the Community Safety Partnership undertook a variety of projects and initiatives. Although it is sometimes difficult to measure success rates, the Partnership believes that these projects and their successes have made an impact on the reductions in crime and has resulted in positive outcomes for local people.

### ***Tackling anti-social behaviour (ASB) including, targeting persistent offenders & providing diversionary and educational activities***

The ASB Task Group continues to work with those causing anti-social behaviour and aims to address the root causes of that behaviour. The Task Group consists of different agencies who discuss individual cases (using the Information Exchange Protocol to discuss personal information). Agencies attending include the TMBC ASB officer, social landlords, education, social services, the youth offending service and the police.

During 2010/11 the Group dealt with 21 young people, 23 adults and 9 families. Actions taken to stop their behaviour included visiting the offenders and issuing 15 warning letters 4 Acceptable Behaviour Agreements were also issued. Of the 53 individuals or families dealt with, 14 had improved their behaviour and were removed from the Task Group agenda. The group also looked and support and education for families and individuals to be sign posted to various agencies for extra support and intervention.

The Power Project had 45 referrals in 2010/11 and there was a reduction of First Time Entrants (FTEs) in the criminal justice system seen across the Borough.

There was also a one off grant funding from KCC for ASB initiatives which went towards a Judo project for young people causing ASB and for vulnerable and young people that have been bullied and also detached sports activities delivered through PACE.

The Partnership has also recently introduced a new project to provide support and guidance for parents of children and young people who cause ASB in their communities. Further development of this work will take place over the coming year.

### ***Improving perceptions***

During 2010/11 the Partnership undertook a number of actions to improve the perception of crime within the borough. Over 25 events were attended by representatives of the Community Safety Partnership and information was given to residents about crime and disorder within the borough. Representatives from the CSP also continued to attend PACT meetings.

The Community Safety Partnership continued to support Neighbourhood Watch promoting their role at community events and implementing Cold Calling Control Zones (CCCZ). Press releases were issued throughout the year on crime prevention and statistics, as well as promoting features in Wealden Watch, an online magazine, and community safety information and advice in the Borough Council's Here and Now newsletter. The Community Safety Unit (CSU) was also developed this year, with police colleagues and partner agencies being co-located within the council offices.

### ***Tackling substance misuse***

The Community Safety Partnership continued to commission the Kenward Trust to provide drug and alcohol services within the borough, including alcohol clinics, and the IFY programme which targets areas that have been highlighted as a hotspot for mainly underage users of alcohol and other substance misuse. Information about legal highs was also distributed to partner agencies. The alcohol control zones continued to be publicised and enforced where appropriate and Trading Standards were able to carry out test purchases in the borough which resulted in over 20 premises being visited and addressing proxy sales.

### ***Tackling violent crime including Domestic Abuse, Night Time Economy and Violence in a public place***

The Community Safety Partnership continued fund the Women's Support Service who have offered advice and support to over 100 women throughout the year who were affected by domestic abuse. The CSP also contributed funding to the Community Domestic Abuse Programme for male perpetrators and during 2010/11 four men from the borough referred themselves to this scheme.

During 2010/11 the number of reported hate crimes slightly increased, due to an increase in publicity of the lines and more engagement through the Ethnic Minority Forum and Sexual Diversity Forum. The Partnership continues to contribute funding towards two independent telephone reporting lines.

Night Time Economy issues are monitored by Police who link with partner agencies to address any specific issues which emerge.

### ***ASB related to driver nuisance***

Over 8 national campaigns were delivered locally across the Borough by the Partnership, to address speeding, drink driving and drug driving. They were delivered at community events and local hot spots where young drivers congregate. In some areas over 30 young drivers were given information on the dangers of speeding. To give added evidence a vehicle that had been involved in a near fatality crashed was used to highlight the effects of dangerous driving especially at high speeds. Speeding continues to be a high concern for PACT Panels.

### ***Environmental Crime***

Over 50 enforcement operations to target environmental crime in hotspot locations were delivered in 2010/11. This was a multi-agency approach involving Tonbridge and Malling Borough Council (Environmental Health), Police and KCC Community Wardens.

During the year a number of different projects have been completed by the Probation Community Payback scheme including litter picking and clearance in Snodland, Hadlow and Tonbridge.

Over 40 community clean ups involving residents and businesses were delivered in 2011/12.

### ***Young People issues***

Although not set as a priority, the Community Safety Partnership believes that an important aspect of its work has been to address issues of concern to young people. This includes working to provide diversionary activities, preventing young people from entering the criminal justice system and raising awareness of crime/personal safety issues.

Last year, the Community Safety Partnership has continued to support youth diversionary activities including the Y-2 Crew scheme, which had 258 attendees over the summer programme, four SNAP discos were held at Larkfield Village Hall and the Charlton Athletic Football Club Positive Futures scheme ran in East Peckham and Hadlow. The Partnership also continued to fund the Power Project and secured funding for PACE, which uses sport to address ASB issues. This was taken forward in Aylesford.

### ***Other General Projects***

Due to the economic recession which continued during 2010/11, the Community Safety Partnership began to see a continued increase in some acquisitive crimes (such as burglaries and theft offences including shoplifting). The Partnership ran events at village/town fetes and community days in partnership with the Crime Prevention Panel. Purse Chains, Shed Alarms and Timer Switches were distributed via community events by local KCC Community Wardens and Police Community Support Officers

(PCSO's). Safer Number Plate events were also held across the borough to help prevent the such thefts. During these events over 200 tamper proof number plates were fitted.

A Safer Towns Co-ordinator was appointed for the Safer Towns Partnership in early 2010 and the Partnership has been expanded through 2010/11 to cover West Malling and Snodland, with over 20 new businesses signing up to the scheme. Further development of the initiative will take place in 2011/12.

New Cold Calling Control Zones in Burham and Eccles will be implemented this year with the help of Neighbourhood Watch. The NHW Co-ordinator is based in the CSU and has been able to attend community events and work closely with partners. Unfortunately this post was a one year contract and has not been renewed due to funding cuts.

Since the beginning of September 2010, 14 young people have been engaged on a full time supported vocational training programme at Horizon Tonbridge. Trainees include seven excluded from school, three ex-offenders, two with drug issues, one homeless young person now living at Ryder House (our supported housing scheme) and one looked after child. Three trainees are over 16, the rest just 14 or 15. Two of these hard to reach trainees who had not previously been attending school for more than 18 months, but are now engaging with the programme regularly on a part time basis.

Theatre in Education ran workshops across primary schools within the Borough in January 2011. The performances highlighted the effects of drugs and alcohol.



## **Priority Issues for 2011 – 2012**

The Strategic Assessment undertaken during the autumn of 2010 has identified the priority areas for the Partnership to tackle during 2011/12 and the Partnership held an 'away day' in February 2011 to discuss the areas that they would focus on during the next year. The Strategic Assessment used data provided by partners, as well as feedback from residents, to recommend priorities for the forthcoming year. The Community Safety Partnership consulted with residents through a variety of sources. Feedback from residents was also gathered via the PACT processes and through engagement with residents at community events. The information arising from consultation with residents was used to inform the priorities within the Strategic Assessment and was also taken into account when the Partnership agreed its priorities for 2011/12.

The top priorities agreed through the Strategic Assessment for 2011/12 are:

- Substance Misuse
- Domestic Abuse
- Anti-Social Behaviour
- Young People's Issues

It was also agreed that the following would need to be addressed by the Partnership:

- Burglary
- Violent Crime
- Driver Behaviour

Although the main focus of the CSP will be the priorities as mentioned above, it will still continue to monitor other types of crime and this will be undertaken through the tasking and co-ordinating processes. The monthly tasking and co-ordinating sub-group will consider all crime types and this will ensure that the CSP is aware of all issues affecting residents in the borough. The Community Safety Unit will also consider all crime types during its daily briefing meetings. Again, this will ensure that all crime and anti-social behaviour is identified by the Community Safety Partnership, and where appropriate, agencies will be tasked to address concerns which arise. The following pages set out the overall targets for the Community Safety Partnership and then go on to give specific actions (within an action plan) linked to each appropriate priority area. The action plan does not include details about the numerous

activities already undertaken by partners, town and parish councils, the voluntary sector and others as part of their day to day work, but highlights activities in addition to core work, which partners will undertake throughout the forthcoming year.

Funding for actions included within the Action Plan is available from a number of different sources, including a contribution that a number of partners make to a 'Local Partnership Fund' and the Safer and Stronger Communities Fund, home office funding which is allocated to district Community Safety Partnerships by the Kent County Council. It is important for the Partnership to ensure that all initiatives provide value for money and that they are effective in reducing crime and disorder in the Borough. Regular monitoring of each project will be undertaken by the Partnership and an evaluation will be provided on completion of the project.

In preparing the action plan, issues such as equality and diversity were considered to ensure that any person, regardless of their protected characteristic feels safe in the Borough. The Partnership continues to support and fund telephone reporting lines for anyone wanting to report sexual or hate crimes. It also takes reports of disability hate crimes seriously and works together to ensure that information is shared to ensure any issues are resolved.

Issues relating to counter terrorism have also been considered by the Partnership. The Community Safety Partnership works with Kent Police and other neighbouring Community Safety Partnerships and have developed a West Kent Prevent Strategy. This will ensure that we are working together with others to undertake any actions which may be necessary to prevent individuals from becoming drawn into violent extremism.

### Targets for West Kent Police

The table below sets out targets for West Kent Police to achieve during 2011/12. To ensure a consistent approach, the Community Safety Partnership has adopted the same targets for coming year and has chosen not set its own local targets for the Borough.

<b>Outcome – Reducing Crime &amp; effectively dealing with anti-social behaviour</b>	<b>Source</b>	<b>Baseline figure</b>	<b>Target for 2011/12</b>
<b>Crime targets</b>			
Level of recorded crime per 1000 population	Genesis	63.9 per 1000 pop	62.6 per 1000 pop (reduction of 1.3 per 1000 pop & 2% reduction on recorded crime)
% of people who reports ASB satisfied with the overall service provided	ASB user satisfaction	75.9% (Jan-Dec)	77.9%
% of the public satisfied with the policing in their area	Kent Crime & Victimization Survey	N/A	increase of 1.5%
% victims satisfied with actions taken	User Satisfaction Survey	86.2% (Jan-Dec)	87.5%
% of recorded crime that is detected	Genesis	31.9% (April-Dec)	35.3%
% of recorded violent crime detected	Genesis	45.8 (Apr-Dec)	52.8%

## Action Plan –2011 - 2012

This year the Action Plan gives details about how partners will tackle the priorities that were identified in the Strategic Assessment. These are anti-social behaviour, domestic abuse, young people's issues and substance misuse, along with burglary, violent crime and driver behaviour. Each priority issue has been split into key themes and specific actions are given for each theme to show how partners will address these issues.

<b>Anti-Social Behaviour – Lead agency Kent Police</b>	
<b>Overview</b>	Levels of recorded anti-social behaviour in the borough have reduced, due to the way the Partnership has worked together to tackle ASB. The Partnership needs to continue working together to address ASB, so that recorded incidents are kept low and the public's perception of partners working together to deal with ASB continues to improve. For those working to reduce anti-social behaviour, it is noticeable that there are certain individuals who cause the most of the problems and who persistently commit anti-social behaviour. The Partnership anticipates that by focusing on these persistent offenders, the overall levels of ASB will continue to reduce. A review of the powers available to tackle ASB is under way and the Partnership will evaluate its conclusions and work with partners to implement new powers as they become available.
<b>Activities</b>	To target persistent offenders the Partnership will undertake actions including: <ul style="list-style-type: none"> <li>• Identifying prolific and persistent ASB offenders affecting the well-being of local communities and taking appropriate inter-agency actions to ensure such behaviour is addressed and changed.</li> <li>• Investigating additional powers available to the CSP to tackle ASB offenders</li> <li>• Reviewing the resources available to tackle ASB</li> <li>• Further promoting the availability of parenting support to help tackle persistent young offenders and encourage more agencies to make referrals to this service</li> <li>• Work with the YISP Power Project to deter young people from offending and entering the criminal justice system for the first time</li> <li>• Using the Mediation service to address neighbourhood disputes and provide restorative justice</li> <li>• Extend awareness of the consequences of anti-social behaviour through schools and youth groups</li> </ul>
<b>Performance measures/targets</b>	<ul style="list-style-type: none"> <li>• Continue the work of the ASB Task Group and achieve an improvement in behaviour in 80% of cases</li> <li>• Power Project - Complete at least 40 'Start onset' assessments and integrated support plans per year. With a minimal of 45 referrals.</li> </ul>
<b>Intended outcomes</b>	A reduction in the levels of recorded anti-social behaviour A reduction in the numbers of persistent/repeat offenders
<b>Key partners</b>	Tonbridge and Malling Borough Council, Kent Police, Kent Probation, Registered social landlords, KCC Youth Offending Service, KCC Children, Families and Education, KFRS, Maidstone Mediation and members of the ASB Task Group

<b>Young People's Issues – Lead agency Local Children's Trust &amp; KCC Youth Services</b>	
<b>Overview</b>	Young people are often victims of crimes and the Partnership is looking to address this through various activities and by working in schools and youth clubs. Not all young people are the cause of ASB but it is often the perception that young people commit and cause the majority of anti-social behaviour. The Partnership will seek to focus on young perpetrators of ASB to change behaviours and will develop diversionary and educational activities. It is hoped that as well as providing alternative activities for young people, the Community Safety Partnership can educate young people on the consequences that their behaviour can have on other residents
<b>Activities</b>	The following diversionary and educational activities will be undertaken to work with young people and to take a more co-ordinated approach. <ul style="list-style-type: none"> <li>• Provide a programme of diversionary activities including SNAP discos, Y2 Crew and other events</li> <li>• Provide education to parents on how they can communicate with their children about different activities</li> <li>• Explore the possibility of providing diversionary activities with voluntary and other groups</li> <li>• Work with 'Vehicle for Change' to target hard to reach young people.</li> </ul>
<b>Performance measures/targets</b>	At least four SNAP events to be held during 2011/12 At least 225 young people to attend the Y2 Crew scheme Work with local Youth Forums on ideas for young people and activities to be taken forward by the CSP At least 4 families to addressed through Think Family Reduce the number of youth on youth crime by 2%
<b>Intended outcomes</b>	To provide young people with activities that they are interested in and to build their confidence if vulnerable A reduction in the recorded levels of youth on youth crime Positive media around young people. Minimum of 8 press releases per year.
<b>Key partners</b>	KCC Youth Service, Tonbridge and Malling Borough Council, KCC Children, Families and Education, Local Children's Trust, Registered Social Landlords, KCC Community Wardens, Connexions, YMCA and KFRS

**Substance Misuse – Lead agency Tonbridge and Malling Borough Council**

<p><b>Overview</b></p>	<p>Substance misuse through excess alcohol consumption and drug taking can often lead to anti-social behaviour and other crimes. It is the aim of the Partnership to target those who are vulnerable to such problems and seek to refer individuals to available support. In addition, the Partnership will seek to deter the purchase of alcohol by those who are underage and the proxy purchasing of alcohol for young people by adults. The consumption of alcohol in public places by under-age drinkers can be a problem in some areas, as the Partnership is working with the Kenward Trust to engage such young people where they are congregating to deter such behaviour.</p> <p>In the past year there has been a % increase in the number of recorded calls to the police reporting drunken behaviour and a % increase in the number of recorded drug offences. Residents are also concerned about drunken/rowdy behaviour as a perceived problem in the borough.</p>
<p><b>Activities</b></p>	<p>The Partnership will run a number of activities to address substance misuse:</p> <ul style="list-style-type: none"> <li>• Continuing to support Alcohol Awareness clinics</li> <li>• Encouraging agencies to make referrals to appropriate support</li> <li>• Working with licensees and retailers to tackle proxy sales to underage customers</li> <li>• Providing information to parents about the availability of alcohol in the home and the dangers of providing alcohol to their children which might then be taken to public places for consumption</li> <li>• Task the Kenward IFY Team to visit areas where public consumption of alcohol by young people is a problem.</li> </ul>
<p><b>Performance measures/targets</b></p>	<p>Run two Test Purchase Operations within the borough</p> <p>Increase the number of problematic drug users (PDU's) getting effective treatment</p> <p>The Kenward Trust IFY Project through the Tasking &amp; Co-ordinating Group be tasked to at least six public locations where young people are known to use drugs and drink underage</p> <p>Offer, with other partners, 180 Alcohol Identification and Brief Advice interventions in community settings, signposting to community treatment services where appropriate</p> <p>Kent Probation to manage the Drug Rehabilitation Requirements (DRR) and Alcohol Treatment Requirements (ATR)</p>
<p><b>Intended outcomes</b></p>	<p>A reduction in the number of recorded calls to the police about drunken behaviour and drug offences</p> <p>A reduction in the levels of anti-social behaviour</p> <p>A reduction in the number of residents who are concerned about drunk or rowdy people in their area.</p>
<p><b>Key partners</b></p>	<p>KCC Trading Standards, Kenward Trust, Kent Police, Tonbridge and Malling Borough Council, NHS West Kent, Kent Probation</p>

<b>Driver Behaviour - Lead agency Kent Fire and Rescue Service</b>	
<b>Overview</b>	Speeding and other forms of dangerous driving such as mobile phone use and boy racing are an increasing concern and priority to residents and local PACT Panels. Vehicle related nuisance calls recorded by the Police and Council did increase in 2010/11. The behaviours to be addressed will include speeding; drink/drug driving and dangerous driving (including the activities of 'boy racers'.)
<b>Activities</b>	The Partnership will run a number of activities to highlight the dangers of poor driver behaviour. These will include: <ul style="list-style-type: none"> <li>• Carrying out multi-agency enforcement activities in public car parks affected by speeding and publicise within local communities</li> <li>• Working with the Kent Fire &amp; Rescue Service Street Team to target the gathering of nuisance vehicles</li> <li>• Working with agencies to add value to on-going publicity campaigns about safer driving, speeding, drink/drug driving and the use of mobile phones.</li> <li>• Working with agencies to educate young drivers</li> <li>• Tasking the BCU motorcycle team to locations suffering from nuisance vehicles identified through the Tasking process</li> <li>• Working with the Valley of Visions project to explore the possibility of an off-road motorcycle track.</li> <li>• Targeting residential areas affected by vehicle misuse (as identified by residents) and providing positive feedback to those residents when action is undertaken.</li> </ul>
<b>Performance measures/targets</b>	Link in with at least 2 national or local road safety campaigns  Run at least three multi-agency enforcement campaigns to include Carmageddon in car parks to tackle vehicle related ASB, speeding and drink/drug driving.  West Kent Police to do at least 2 Restorative Justice orders with offenders for speeding  Implement Speed Watch in the Borough
<b>Intended outcomes</b>	A reduction in the number of people killed or seriously injured  A reduction in the number of vehicle related nuisance calls recorded by the police
<b>Key partners</b>	Kent Police, Kent Fire and Rescue Service, Tonbridge and Malling Borough Council, KCC Road Safety, Kent Probation, KCC highways

<b>Burglary - Lead agency Kent Police</b>	
<b>Overview</b>	Burglary has increased slightly across the borough. The Partnership has not identified this as a major priority, but believe it can be reduced by effective Partnership working and appropriate use the Partnership's tasking processes to react to increases of such crimes in local areas.
<b>Activities</b>	The Partnership will run a number of activities regarding burglary. These will include: <ul style="list-style-type: none"> <li>• Helping to promote Neighbourhood Watch</li> <li>• Publicise Cold Calling Control Zones (CCCZ)</li> </ul>
<b>Performance measures/targets</b>	Promote education and awareness of domestic security issues across the Borough to residents through surgeries, fetes and community days. At least four to be attended  Implement two CCCZ in the Borough
<b>Intended outcomes</b>	A reduction in the number of burglaries  Highlighted awareness to residents, not to leave windows and doors open and items on display
<b>Key partners</b>	Kent Police, Neighbourhood Watch and Tonbridge and Malling Borough Council



<b>Domestic abuse – Lead agency Tonbridge and Malling Borough Council</b>	
<b>Overview</b>	<p>Domestic abuse is defined by the Government as ‘any incident of threatening behaviour, violence or abuse (psychological, physical, sexual, financial or emotional) between adults who are or have been intimate partners or family members, regardless of gender, religion or sexuality’.</p> <p>The number of domestic abuse incidents reported to the police has risen by %. The Borough has also seen an increase of recorded repeat victims of domestic abuse of %. It is also accepted that domestic abuse remains an under reported issue.</p>
<b>Activities</b>	<p>As well as continuing to support and help women victims of domestic abuse, the Community Safety Partnership will develop the services available to other victims (including male victims), as we recognise that it is not just women who are victims of domestic abuse. We will also look to expand the support services currently provided by the Women’s Support Service so that we can target repeat/high risk victims of domestic abuse and encourage more agencies to refer women to this service for support. The Community Safety Partnership will also continue to fund the Community Domestic Abuse Programme (CDAP) which targets male perpetrators of domestic abuse and we will continue to support the MARACs process and ensure more repeat victims are dealt with by this process.</p> <p>Other activities will include:</p> <ul style="list-style-type: none"> <li>• Further publicise the availability of support form the Women’s Support Service</li> <li>• Organising additional joint training on domestic abuse for frontline staff</li> <li>• Encouraging more male perpetrators to attend the CDAP/IDAP programmes.</li> <li>• Develop a new service to give support to male victims in addition to publicising the services available nationally</li> <li>• Implement a more detailed action plan to tackle domestic abuse, to be reviewed by the monthly Tasking &amp; Co-ordination Group of the Partnership</li> </ul>
<b>Performance measures/targets</b>	<p>Reduce the percentage of repeat victims of domestic abuse to 20%</p> <p>Women’s Support Service to offer support to 75 high risk victims of domestic abuse</p> <p>Ensure at least three men from the community refer themselves to the Community Domestic Abuse Programme</p> <p>Run at least one domestic abuse joint training session for front line workers</p> <p>Local Domestic Abuse Action Plan to help reduce domestic abuse and repeat victims of Domestic Abuse. Actions to be over 80% on target</p> <p>Work with Partners in schools to address Sexual Respect</p>
<b>Intended</b>	To reduce the number of repeat victims

<b>outcomes</b>	To reduce the number of domestic abuse incidents reported to the police To ensure that any person who requires help knows how and where to access this support. To increase the number of referrals to support services including the MARACS process
<b>Key partners</b>	Women's Support Service, Tonbridge and Malling Borough Council, St Giles Trust, Kent Police, Victim Support, Kent Probation

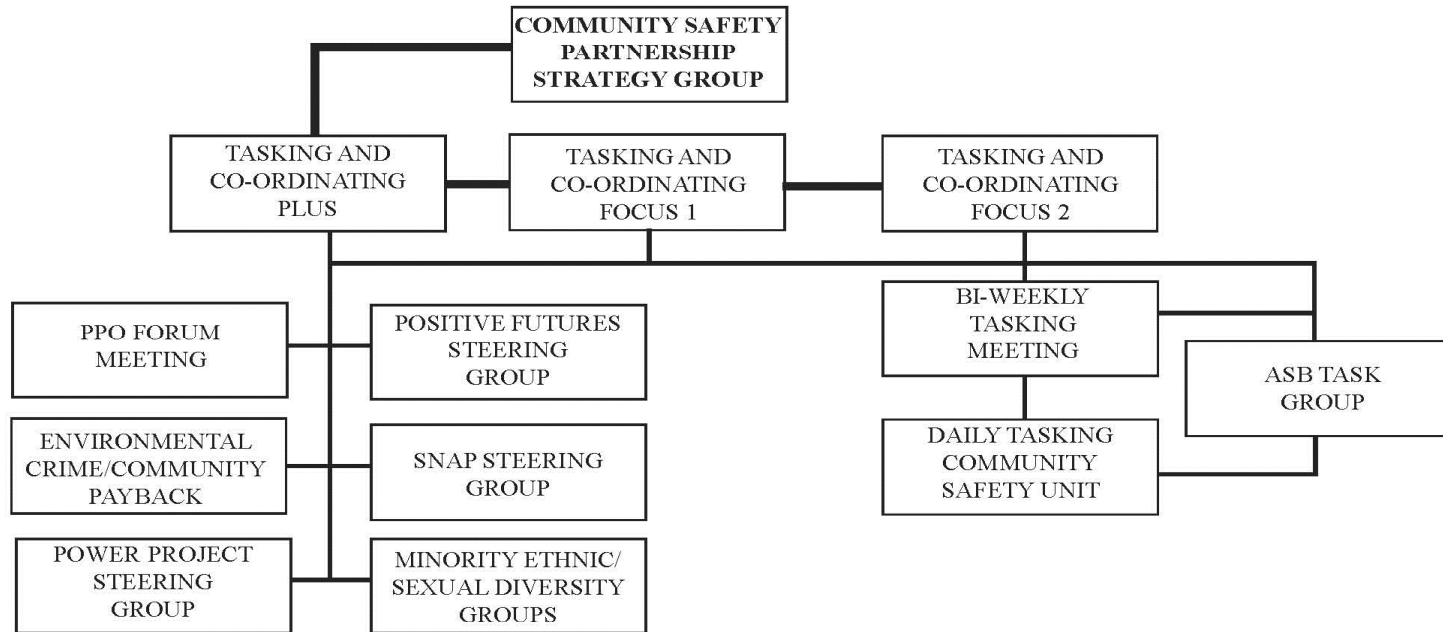
<b>Violent Crime – Lead agency Kent Police</b>	
<b>Overview</b>	The time period for Night Time Economy (NTE) is defined as Thursday, Friday and Saturday nights from 8pm until 4am. Although there has been a ??? of % in recorded Night Time Economy violence, it is still of concern to the Partnership. The main location for NTE violence in the borough is Tonbridge town centre, although there are other areas where this does occur including West Malling and Larkfield.
<b>Activities</b>	In order to tackle NTE violence the Partnership will undertake a variety of activities including: <ul style="list-style-type: none"> <li>• Establish and expand the Safer Town's Partnership</li> <li>• Expand the role of the Pubwatch scheme and increase the number of exclusion notices</li> <li>• Analyse patterns of NTE violence and focus initiatives on hotspot areas, including the deployment of CCTV</li> <li>• Target persistent offenders</li> <li>• Consider the need for a campaign to target the excessive consumption of alcohol</li> </ul>
<b>Performance measures/targets</b>	Increase the number of businesses participating in the Safer Town Scheme by 25 %  Increase the number of exclusion/banning notices by 20%  Reduce the number of night time incident by 5%  Increase the members of PubWatch by 25%
<b>Intended outcomes</b>	A continued reduction in NTE violence offences  A reduction in the number of residents who are concerned about drunk and rowdy behaviour
<b>Key partners</b>	Kent Police, Tonbridge and Malling Borough Council, NHS West Kent, Safer Towns Partnership

<b>Environmental Crime – Lead agency Tonbridge and Malling Borough Community Safety Partnership</b>	
<b>Overview</b>	Public perception is often a greater concern to residents and businesses than recorded crime. For example Environmental Crime such as litter, graffiti and fly tipping have a greater overall effect due to the visibility of such incidents. Within the borough, there were ?? reported incidents of graffiti reported to the police and reported to Tonbridge and Malling Borough Council between October 2009 to September 2010.
<b>Activities</b>	The Partnership will run a number of activities to reduce environmental crime. These will include: <ul style="list-style-type: none"> <li>• Analysis of repeat locations and the tasking of appropriate actions</li> <li>• Undertaking multi-agency enforcement operations to target hotspot areas</li> <li>• Working with schools to educate young people on the consequences of environmental crime</li> <li>• Running operations to catch offenders</li> <li>• Work with Probation Service Community Payback Scheme on community projects</li> </ul>
<b>Performance measures/targets</b>	Joint projects with CSU & the Borough Council's Environmental Health team to target at least 6 hot spot enforcement/activities around environmental crime At least 7 community clean ups to be taken forward by Probations Community Payback Team Run 50 enforcement operations to target environmental crime hotspots Reduce the number of graffiti reports and clean ups in the Borough Hold 40 Community Clean up events Joint Educational packages to be delivered at WK1 College, Secondary and primary schools
<b>Intended outcomes</b>	A continued reduction in the levels of graffiti, littering and fly tipping reported to the Police and the Borough Council  An increase in the visibility of community clean ups
<b>Key partners</b>	Tonbridge and Malling Borough Council, Kent Police, KCC Children, Families and Education, KCC Community Wardens, Clean Kent Campaign, Kent Probation, Registered Social Landlords, KFRS, Environment Agency, Highways Agency.

## Membership of the Community Safety Partnership and contact details

<p><b>Tonbridge &amp; Malling Borough Council</b> Gibson Building, Gibson Drive Kings Hill, West Malling Kent ME19 4LZ Tel: 01732 844522 Web: <a href="http://www.tmbc.gov.uk">www.tmbc.gov.uk</a></p>	<p><b>Kent Police</b> 1 Pembury Road Tonbridge Kent TN9 2HS Tel:01732 771055 Web: <a href="http://www.kent.police.uk">www.kent.police.uk</a></p>	<p><b>Kent Fire &amp; Rescue Service</b> South Division HQ, Loose Road Maidstone Kent ME15 9QB Tel: 01622 774500 Web: <a href="http://www.kent.fire-uk.org">www.kent.fire-uk.org</a></p>	<p><b>Kent Police Authority</b> 1<sup>st</sup> Floor, Gail House Lower Stone Street Maidstone ME15 6NB Tel: 01622 677055 Web: <a href="http://www.kentpa.kent.police.uk">www.kentpa.kent.police.uk</a></p>
<p><b>NHS West Kent</b> Wharf House, Medway Wharf Road Tonbridge Kent TN9 1RE Tel: 01732 375200 Web: <a href="http://www.westkentpct.nhs.uk">www.westkentpct.nhs.uk</a></p>	<p><b>Kent Probation Service</b> 17 Garden Road Tonbridge Wells Kent TN1 2XB Tel: 01892 559350 Web: <a href="http://www.kentprobation.org">www.kentprobation.org</a></p>	<p><b>KCC Social Services</b> Croft House, East Street Tonbridge Kent TN9 1HP Tel: 01732 362442 Web: <a href="http://www.kent.gov.uk">www.kent.gov.uk</a></p>	<p><b>KCC Children, Families and Education</b> 17 Kings Hill Avenue West Malling Kent ME19 4UL Tel: 08458 247247 Web: <a href="http://www.kent.gov.uk">www.kent.gov.uk</a></p>
<p><b>KCC Youth Offending Service</b> Croft House, East Street Tonbridge Kent TN9 1HP Tel: 01732 362442 Web: <a href="http://www.kent.gov.uk">www.kent.gov.uk</a></p>	<p><b>KCC Youth Service</b> Area Office, Infozone 3 Palace Avenue Maidstone Kent, ME15 Tel: 01622 751622 Web: <a href="http://www.kent.gov.uk">www.kent.gov.uk</a></p>	<p><b>KCC Trading Standards</b> PO Box 286 West Malling Kent ME19 4HW Tel: 01732 525291 Web: <a href="http://www.kent.gov.uk">www.kent.gov.uk</a></p>	<p><b>KCC Community Safety Unit</b> 1st Floor Invicta House County Hall Maidstone Kent ME14 Tel: 01622 221106 Web: <a href="http://www.kent.gov.uk">www.kent.gov.uk</a></p>
<p><b>Russet Homes</b> Basted House, Harrison Road Borough Green Sevenoaks TN15 8PB Tel: 01732 780999 Web: <a href="http://www.russethomes.org">www.russethomes.org</a></p>	<p><b>Victim Support</b> Norman House, Beaver Road Industrial Estate, Ashford, TN23 7SH Tel: 0845 389 9527 Web: <a href="http://www.victimsupport.org.uk">www.victimsupport.org.uk</a></p>	<p><b>Neighbourhood Watch</b> c/o 15 Sullivan Road Tonbridge Kent, TN10 4DD Tel: 01732 355329 Web: <a href="http://www.wkna.org">www.wkna.org</a></p>	<p><b>Kent Drug and Alcohol Action Team</b> Invicta House, 3rd Floor County Road Maidstone Kent ME14 1XX Tel: 01622 221676 Web: <a href="http://www.kdaat.co.uk">www.kdaat.co.uk</a></p>

**Tonbridge and Malling Community Safety Partnership - Revised Structure**



# TONBRIDGE AND MALLING



Scale 1:120,000

Map dated 29/11/2010



Reproduced from the Ordnance Survey with the permission of Her Majesty's Stationery Office. Crown Copyright. Unauthorised copying infringes Crown Copyright and may lead to civil proceedings. Tonbridge & Malling Borough Council Licence Number 100023300 (2010).

**Tonbridge and Malling Community Safety Partnership**

**Tel: 01732 844522**

**Email: [csp@tmbc.gov.uk](mailto:csp@tmbc.gov.uk)**

**Web: [www.tmcommunitysafety.org.uk](http://www.tmcommunitysafety.org.uk)**





