

# TMBC

## Net Zero Project

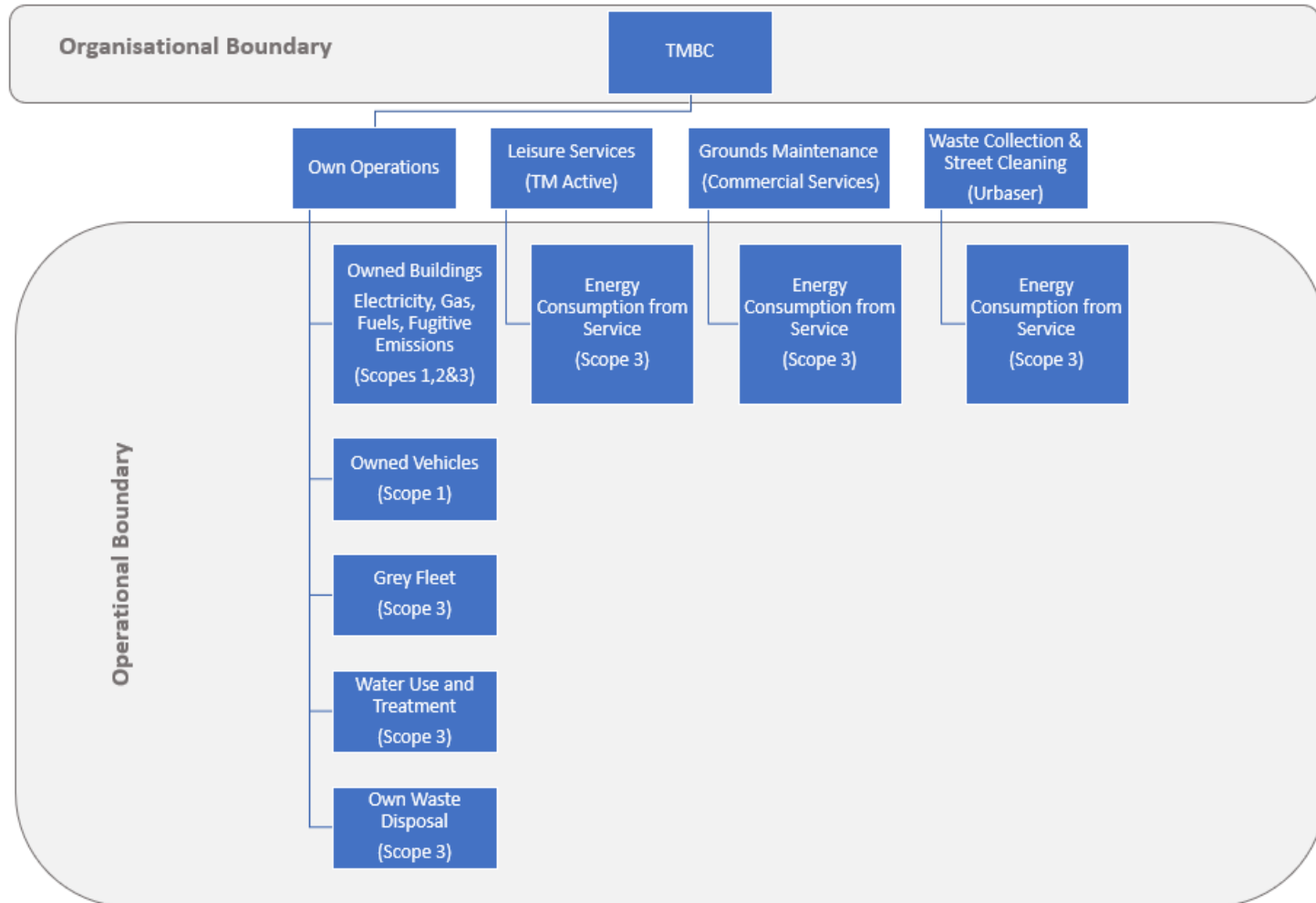
# Carbon Footprint & BAU Forecast

Date: 9<sup>th</sup> February 2021

# Contents

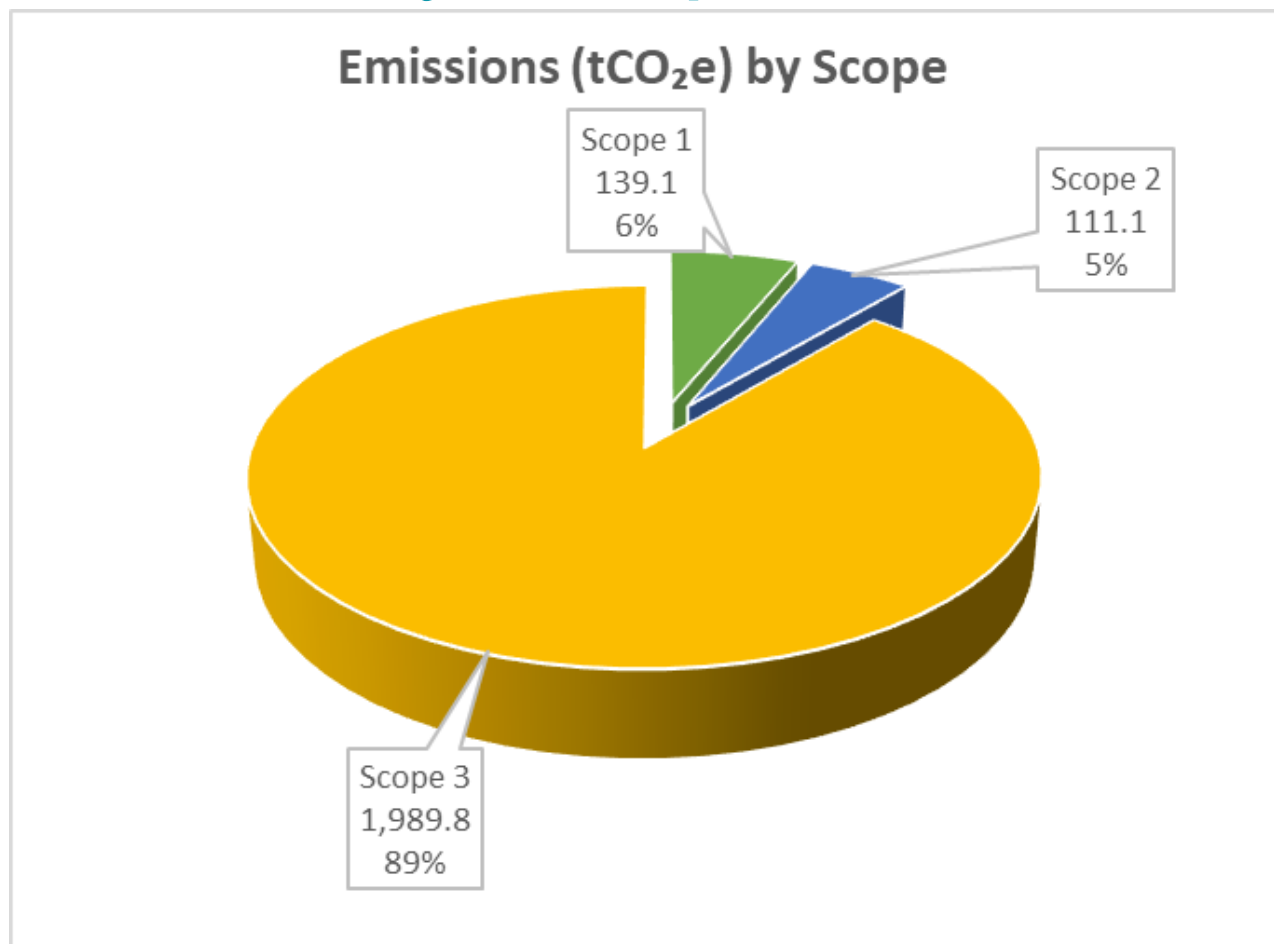
- Scoping Recap
- Carbon Footprint
  - Emissions by Scope
  - Emissions by Source
    - All Entities
    - Own Estate
    - Leisure Contract
    - All sources (Own estate breakdown, Leisure, Grounds Maintenance and Waste contract combined)
  - Emissions by Sector
  - Emissions from Transport Fuel Use
- BAU Forecast to 2050
- Points of Note

# Scoping Recap



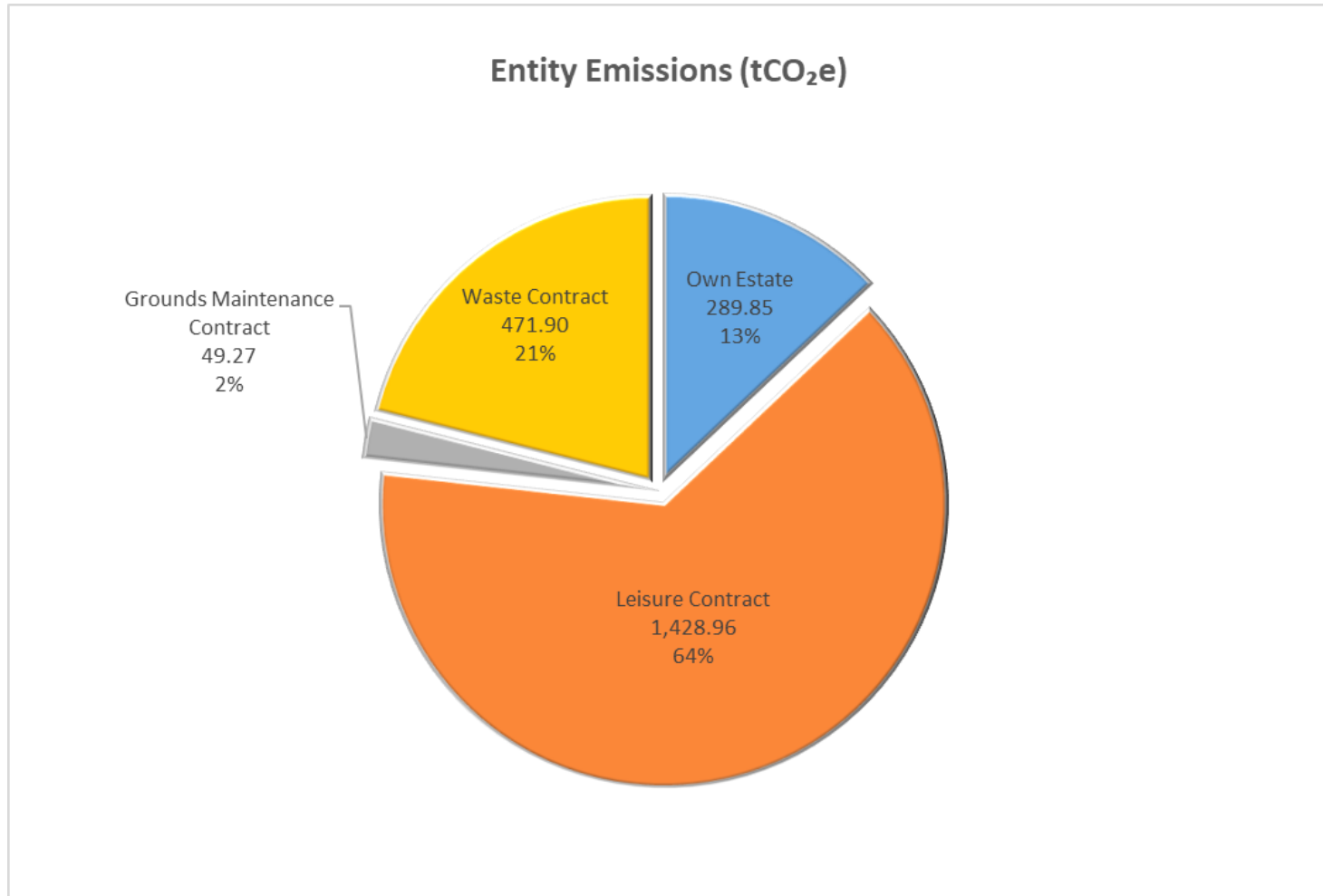
Page 3

# Emissions by Scope



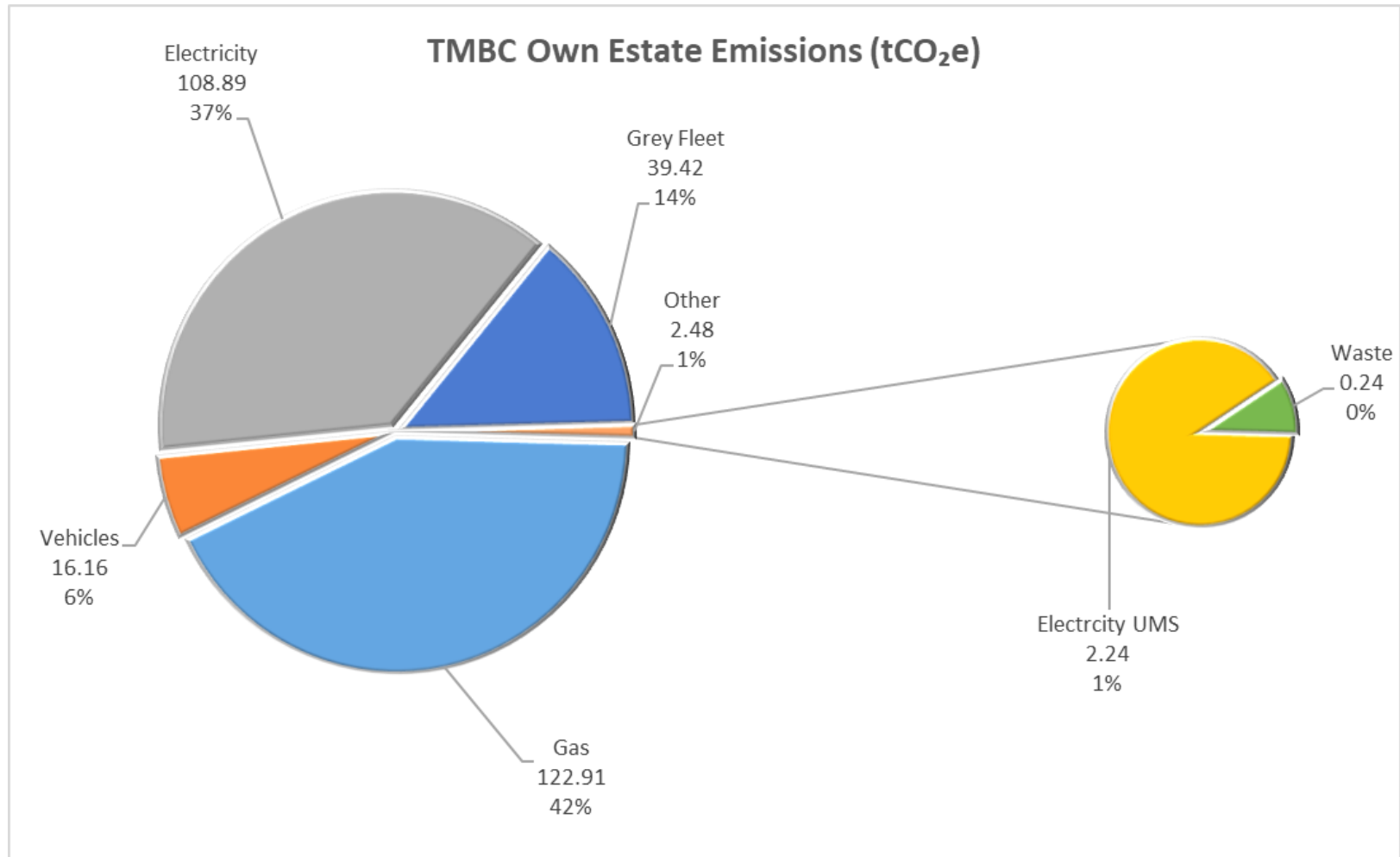
Total emissions FY 2019 to 2020: 2,240.0 tCO<sub>2</sub>e

# Emissions by Source – All Entities



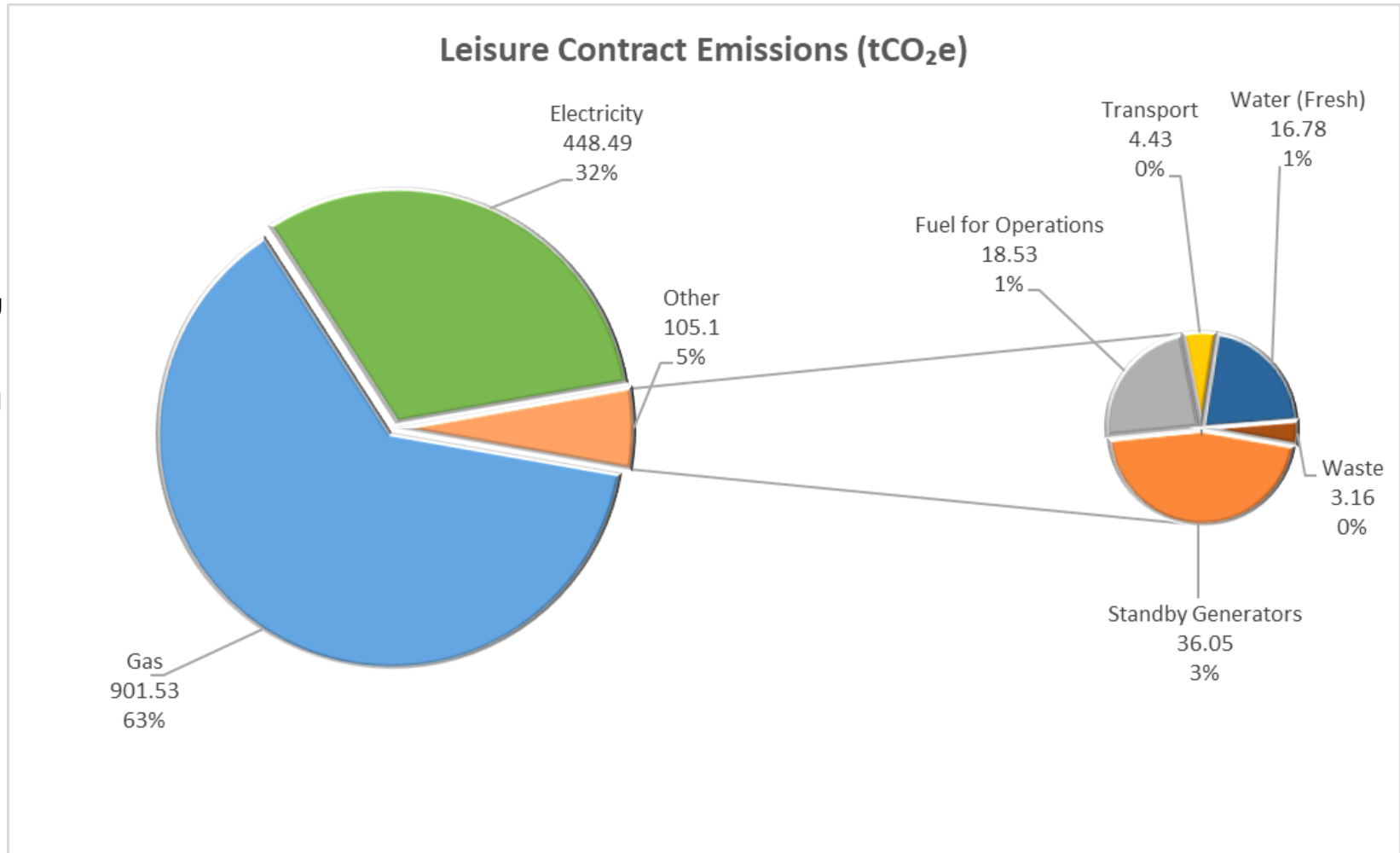
# Emissions by Source – Own Estate

Page 6



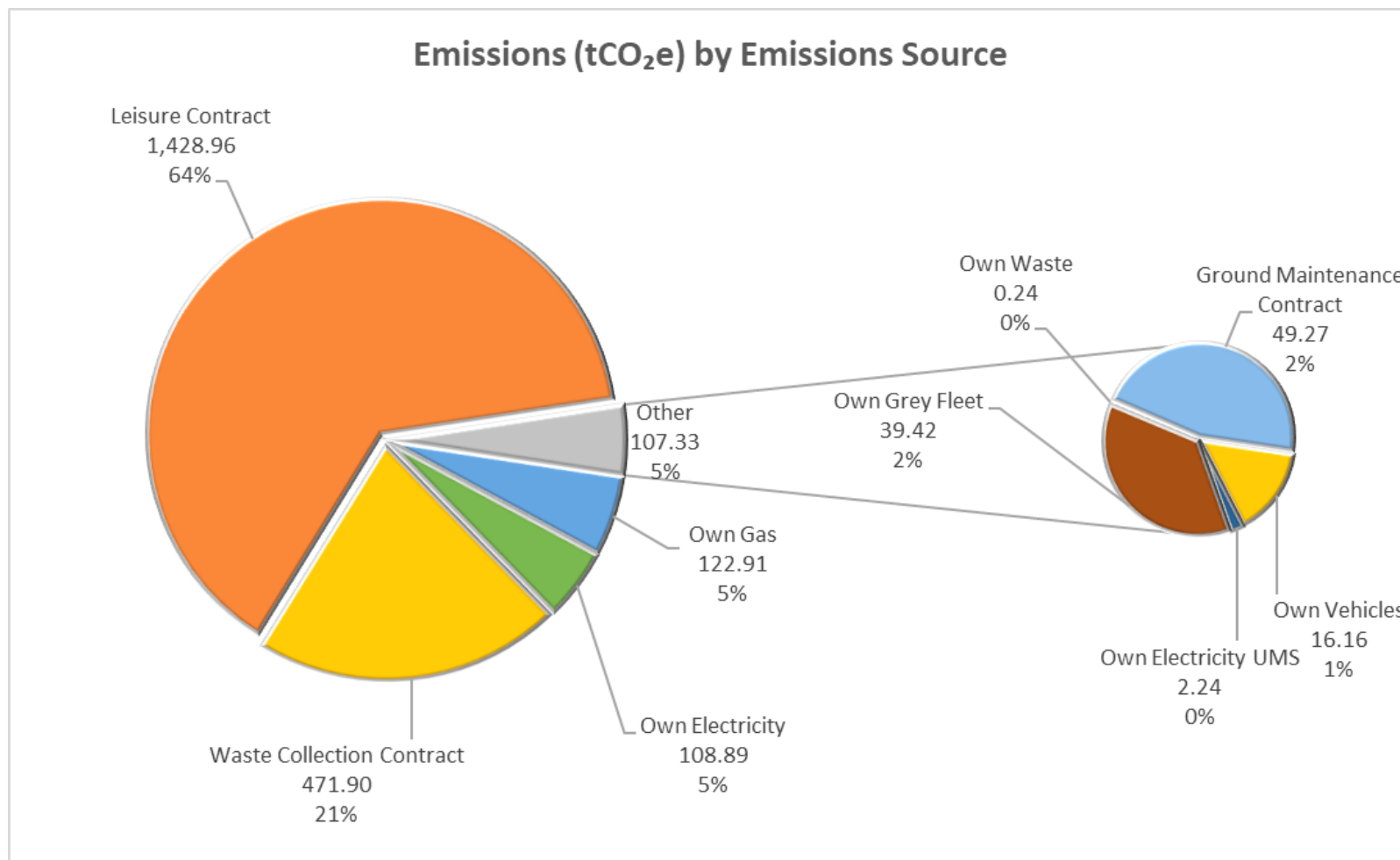
# Emissions by Source – Leisure Centre

Page 7



# Emissions for All Sources

Page 8



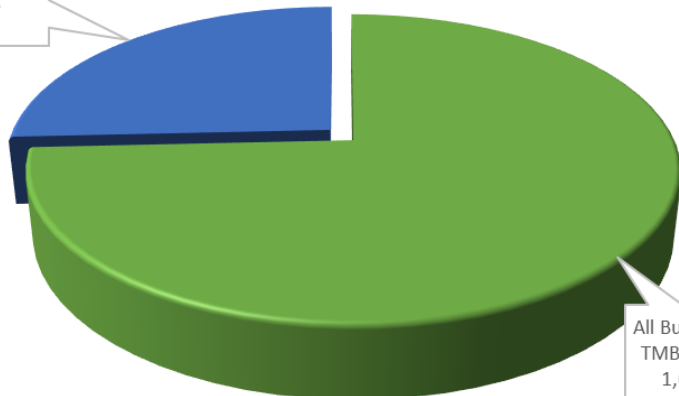


# Emissions by Sector

Page 9

Emissions (tCO<sub>2</sub>e) by Sector  
- Combined

All Transport & Operations  
576.6  
26%

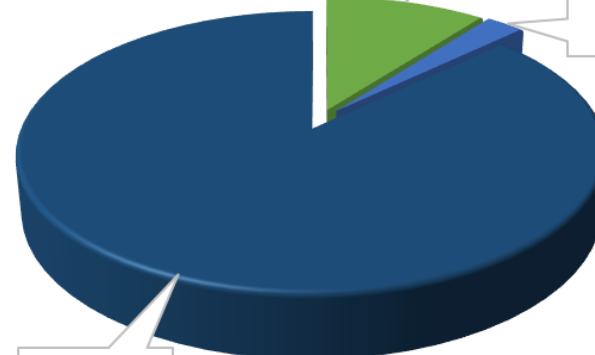


All Buildings & TMBC Estate  
1,663.4  
74%

Emissions (tCO<sub>2</sub>e) by Sector

TMBC Buildings & Estate  
234.3  
10%

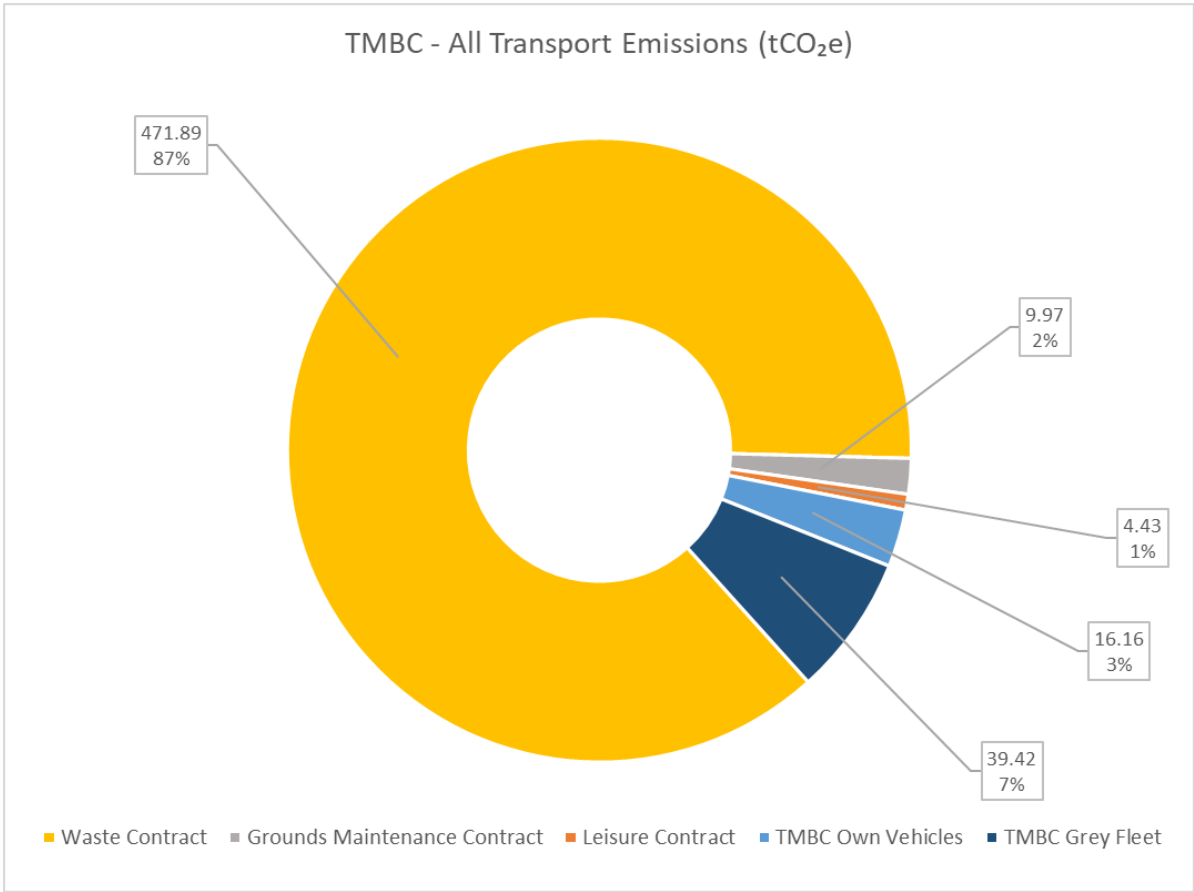
TMBC Transport  
55.6  
3%



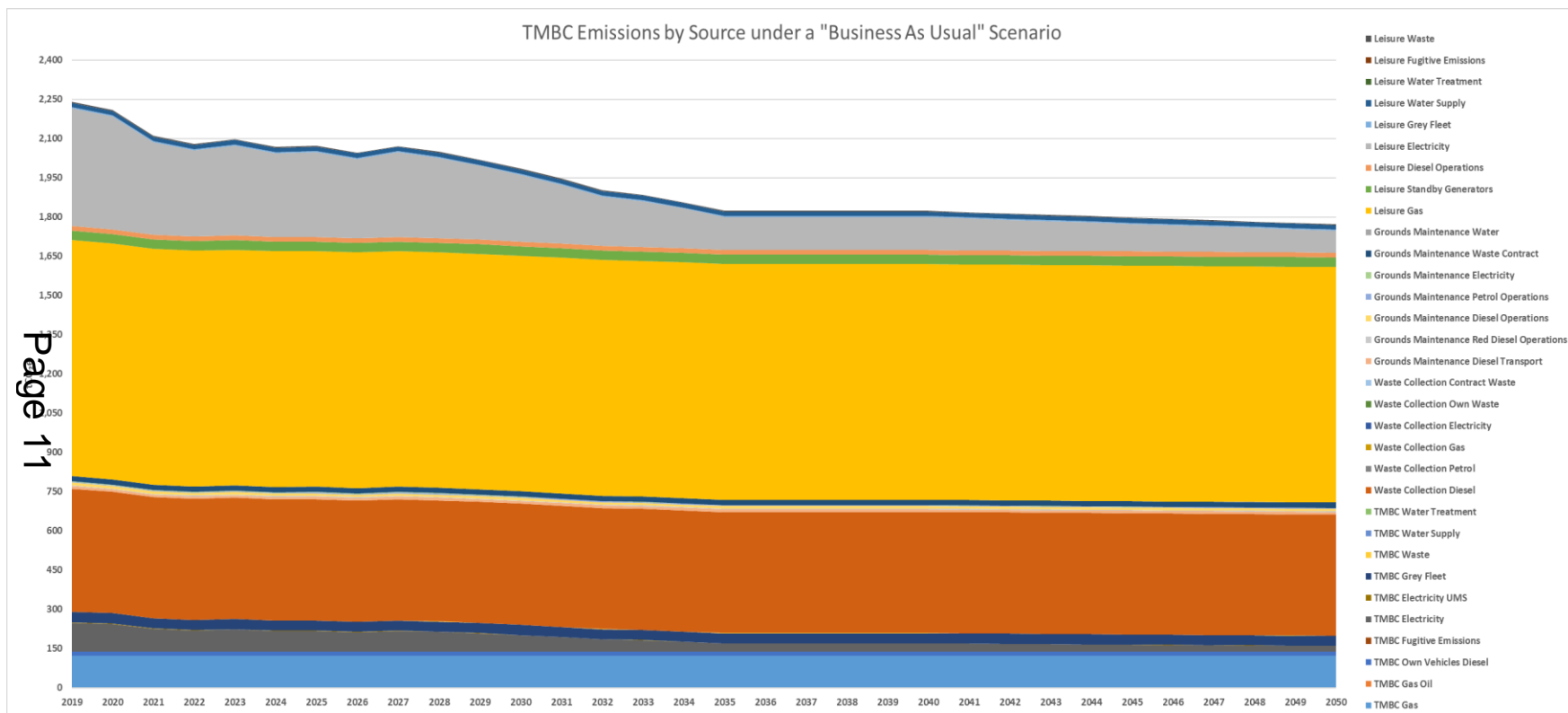
External Organisations / Contracts  
1,950.1  
87%

# Transport Fuel Use

Page 10



# BAU Forecast to 2050



Page 11

## Emissions by 2050: 1,772.50 tCO<sub>2</sub>e

### Highlights

- Leisure contract electricity
- Leisure contract gas
- Waste contract diesel for vehicles
- Own estate gas

# Points of note

- TMBC's own estate makes up 13% of the overall footprint
- Electricity and gas make up a large and similar proportion for associated emissions
- Leisure contract contributes significantly to the carbon footprint due to gas usage
- Emission reduction for BAU forecast between 2020 & 2035 is largely due to forecasts around electricity generation becoming cleaner
- Gas emissions remain largely static based on current long-term forecasts