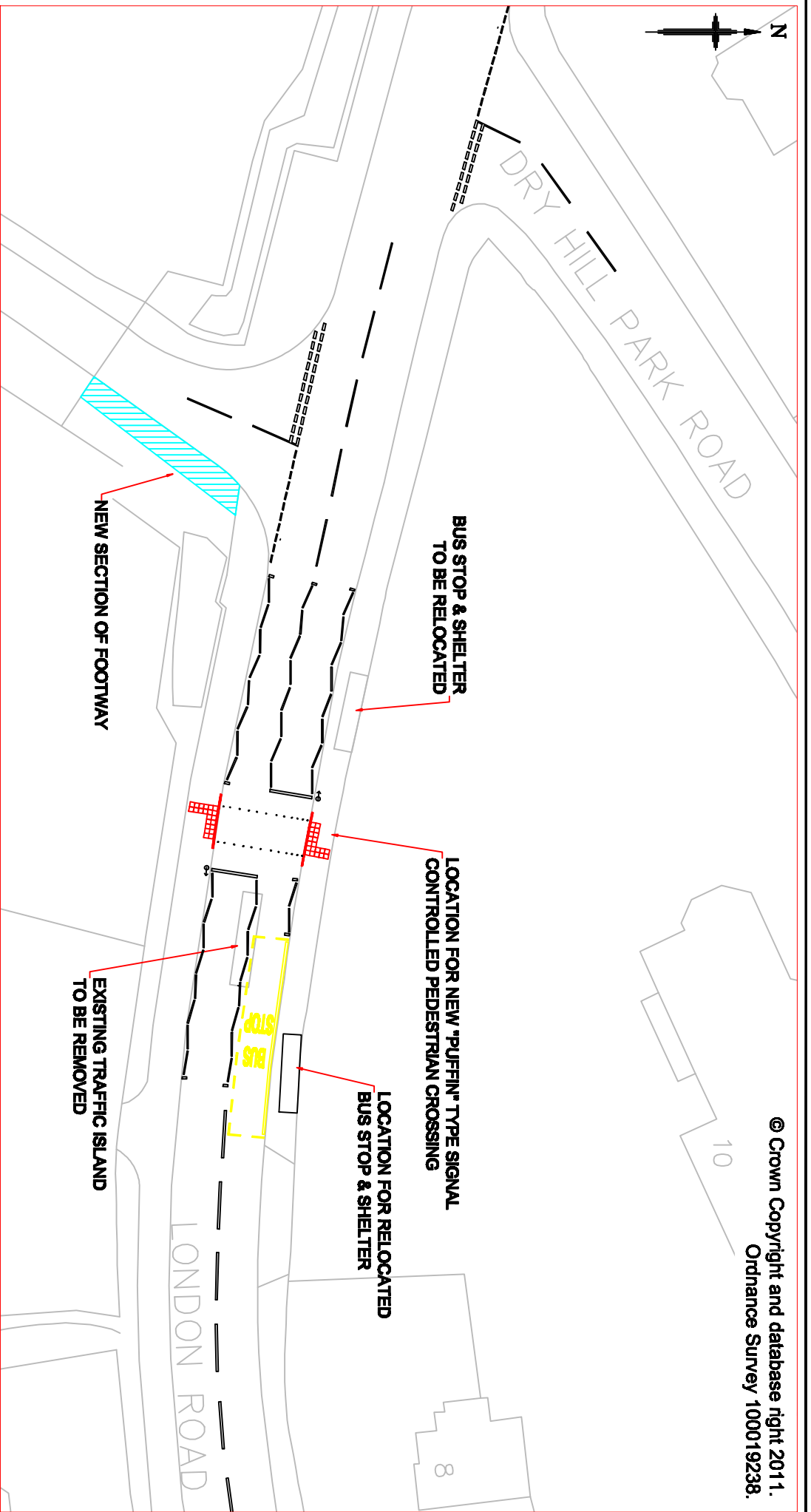


© Crown Copyright and database right 2011.
Ordnance Survey 100019238.



Rev	Revision Date	Purpose of revision	Drawn	Checked	Approved
0	28/02/14				

This drawing is not to be used in whole or part other than for the intended purpose and project as defined on the drawing. Refer to the contract for full terms and conditions.

Kent County Council

 Kent County Council
 Ashford Highway Dept
 Hemsford Industrial Estate
 Ashford TN24 8AD
 Tel: 02000 416161

**B 245 LONDON ROAD
PEDESTRIAN CROSSING**

PROPOSED LAYOUT

FOR CONSULTATION

Scale: **Not to Scale** Do not scale

Drawing number: **TM/CRM/0037/1901**

Rev: **0**