

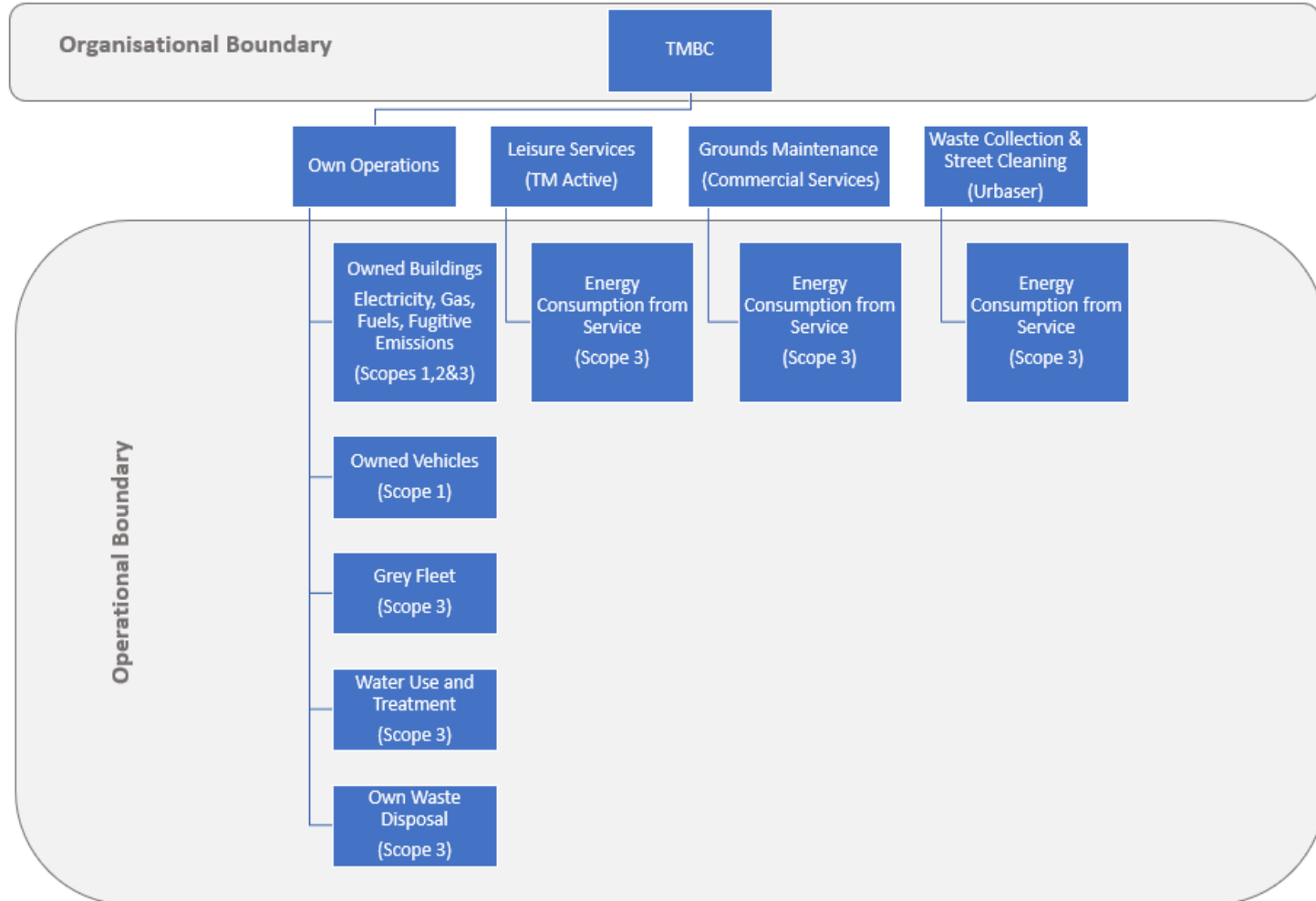
TMBC Net Zero Project Carbon Footprint & BAU Forecast

Date: 9th February 2021

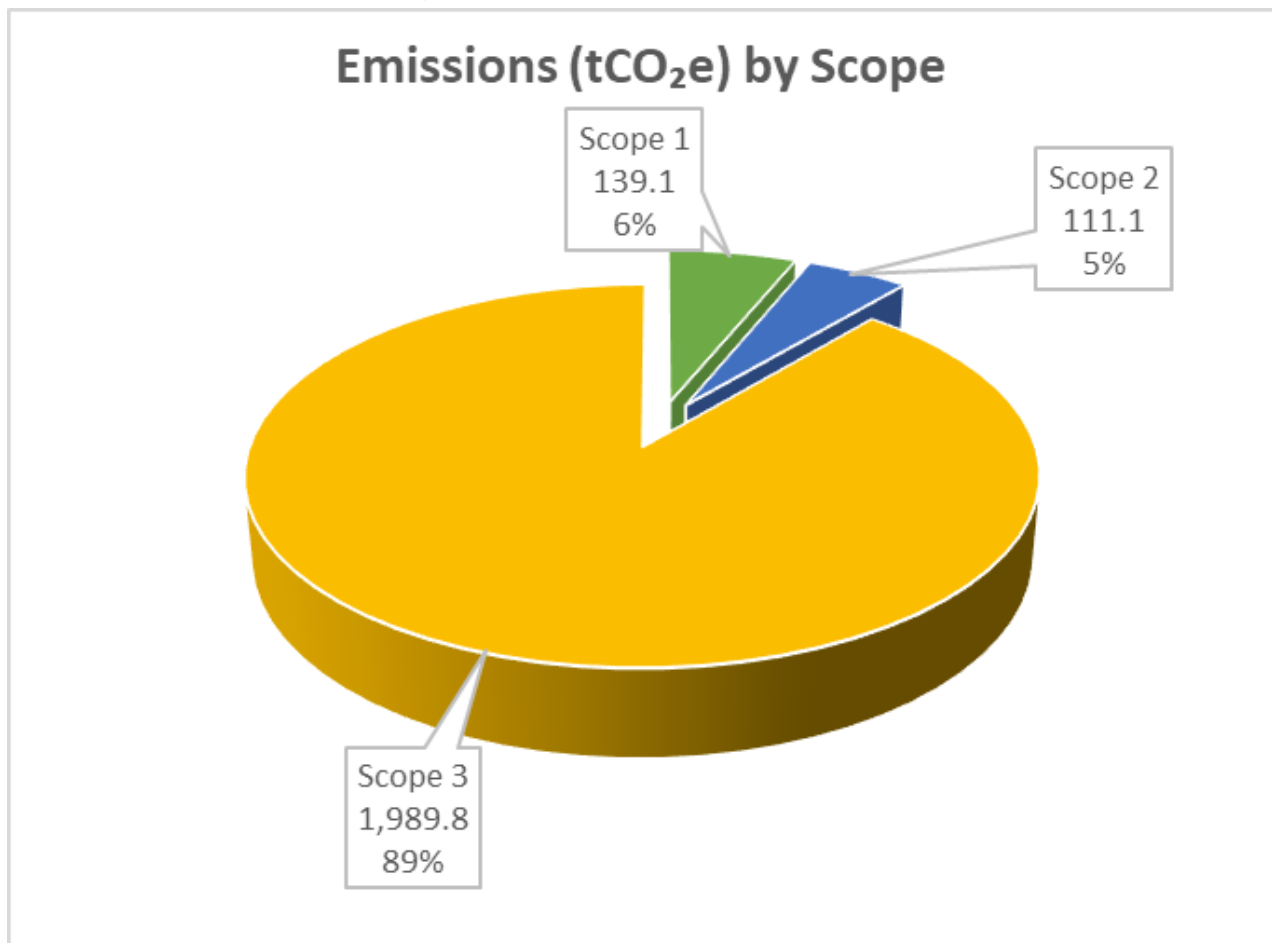
Contents

- Scoping Recap
- Carbon Footprint
 - Emissions by Scope
 - Emissions by Source
 - All Entities
 - Own Estate
 - Leisure Contract
 - All sources (Own estate breakdown, Leisure, Grounds Maintenance and Waste contract combined)
 - Emissions by Sector
 - Emissions from Transport Fuel Use
- BAU Forecast to 2050
- Points of Note

Scoping Recap

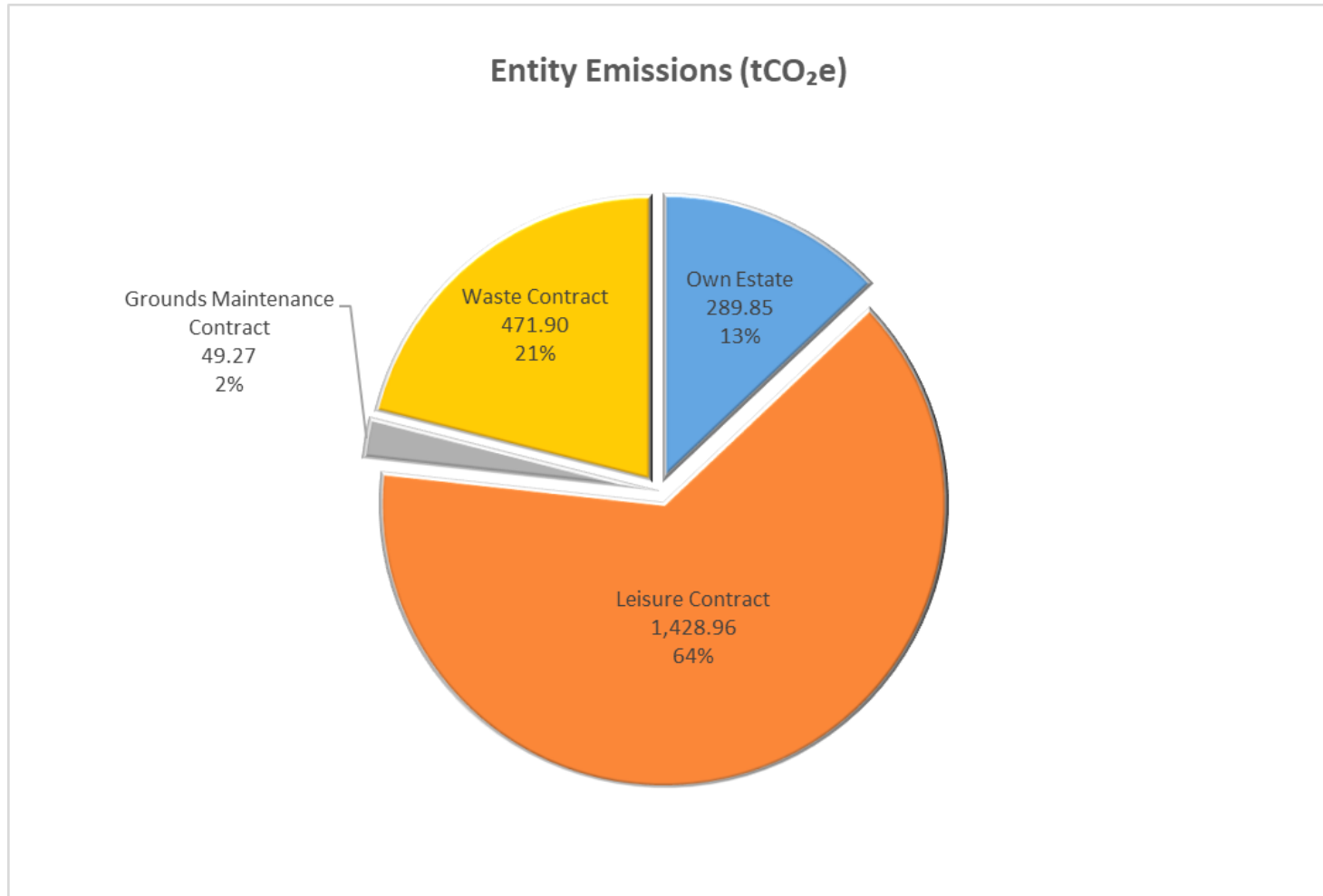


Emissions by Scope

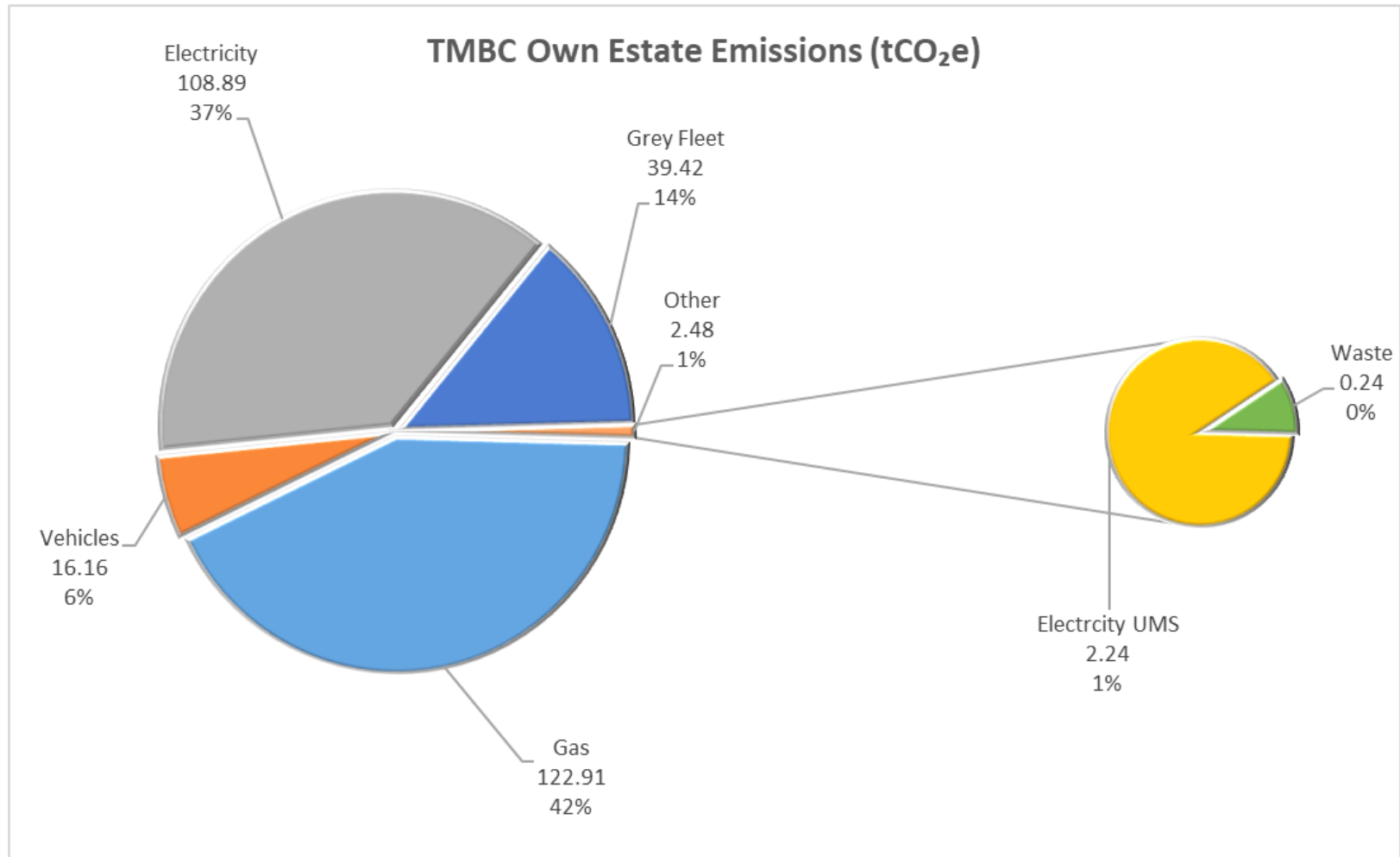


Total emissions FY 2019 to 2020: 2,240.0 tCO₂e

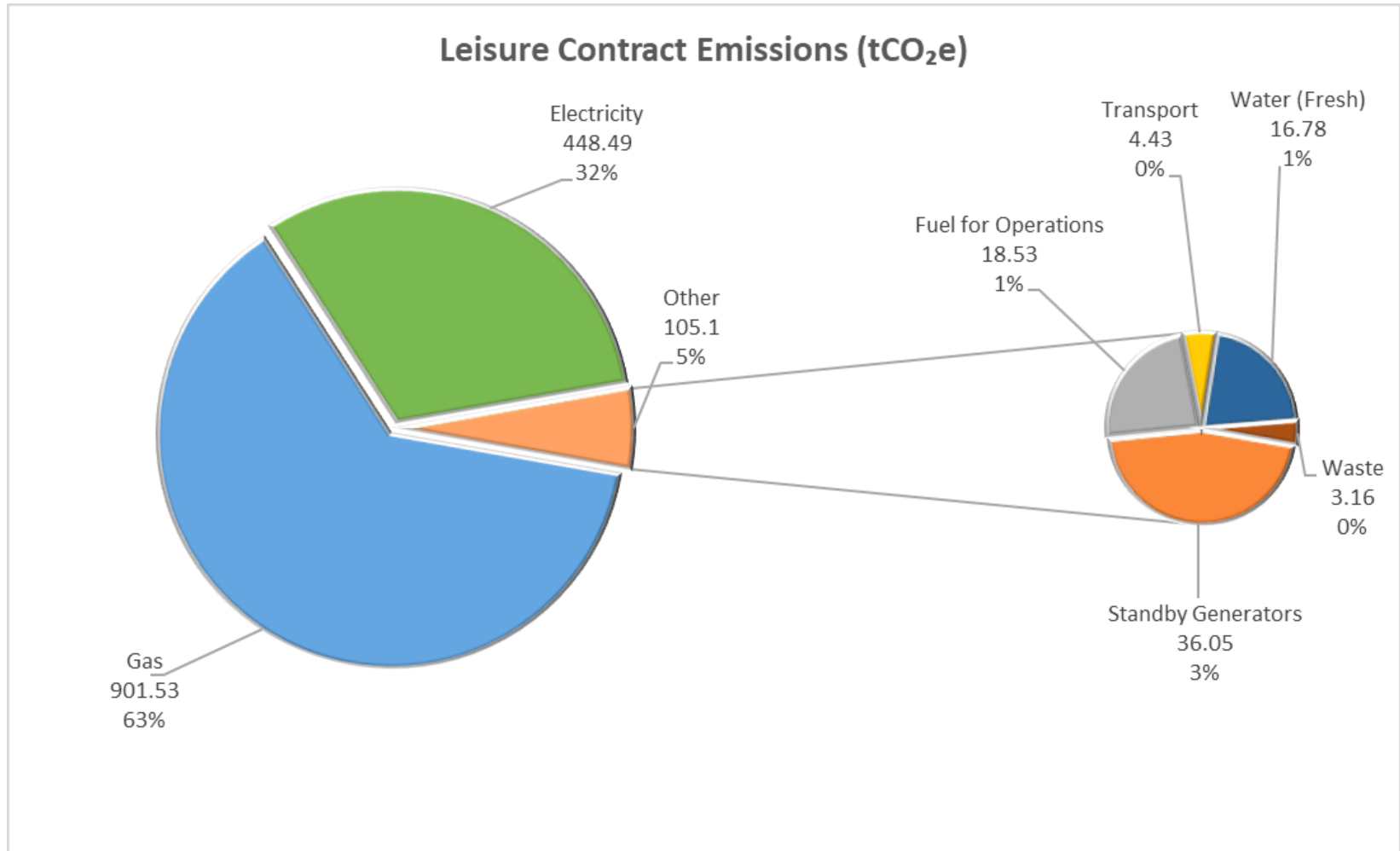
Emissions by Source – All Entities



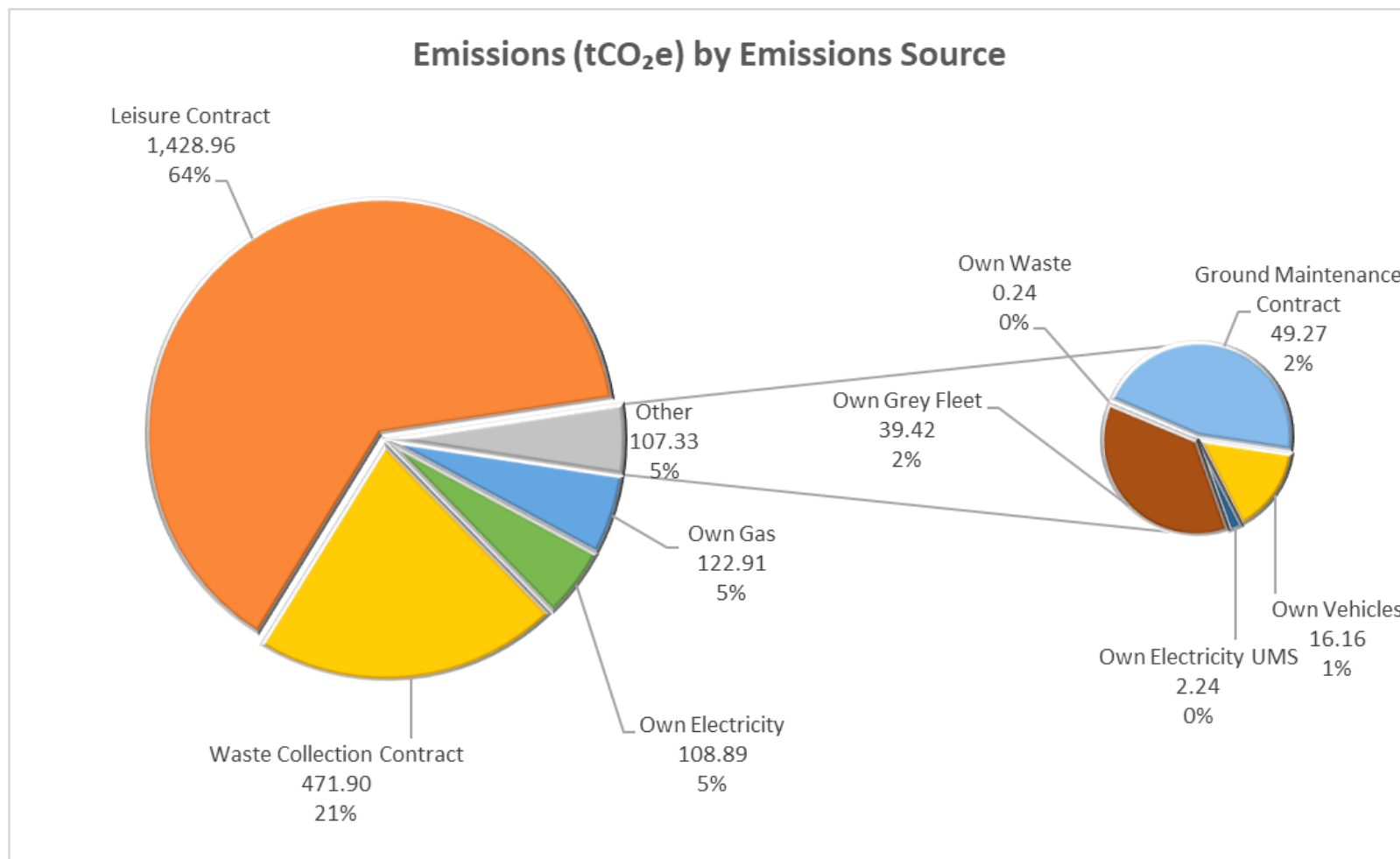
Emissions by Source – Own Estate



Emissions by Source – Leisure Centre



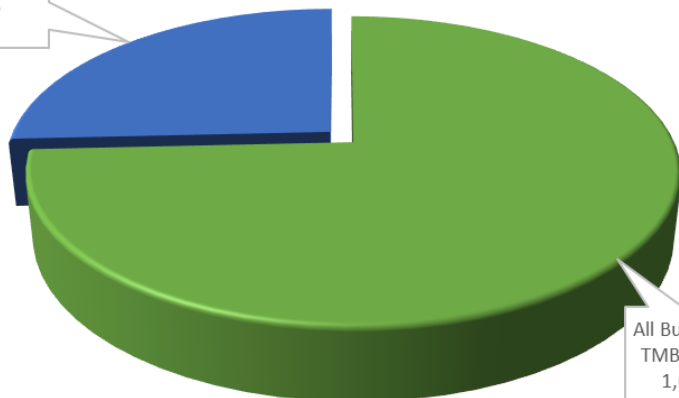
Emissions for All Sources



Emissions by Sector

Emissions (tCO₂e) by Sector
- Combined

All Transport &
Operations
576.6
26%

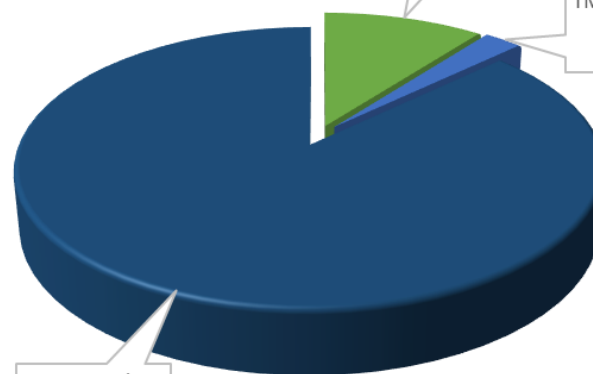


All Buildings &
TMBC Estate
1,663.4
74%

Emissions (tCO₂e) by Sector

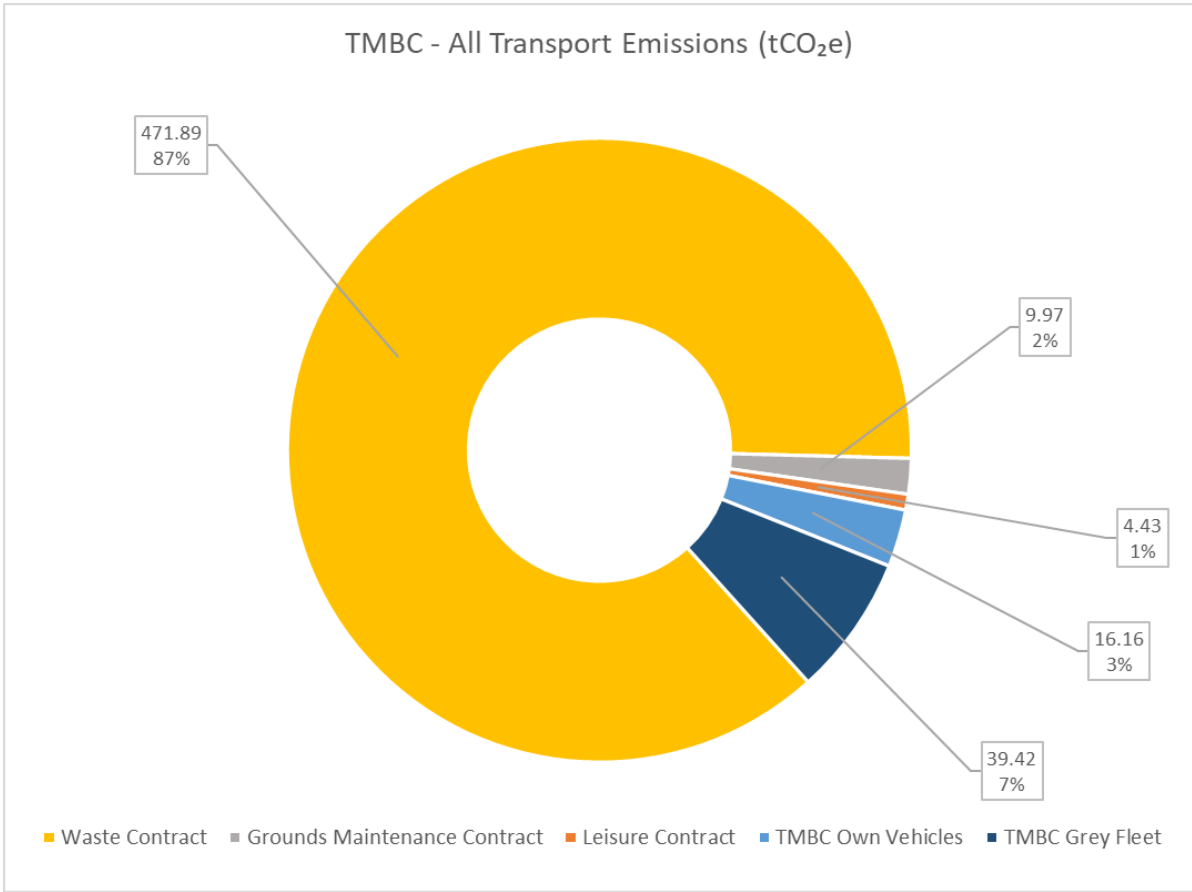
TMBC Buildings &
Estate
234.3
10%

TMBC Transport
55.6
3%

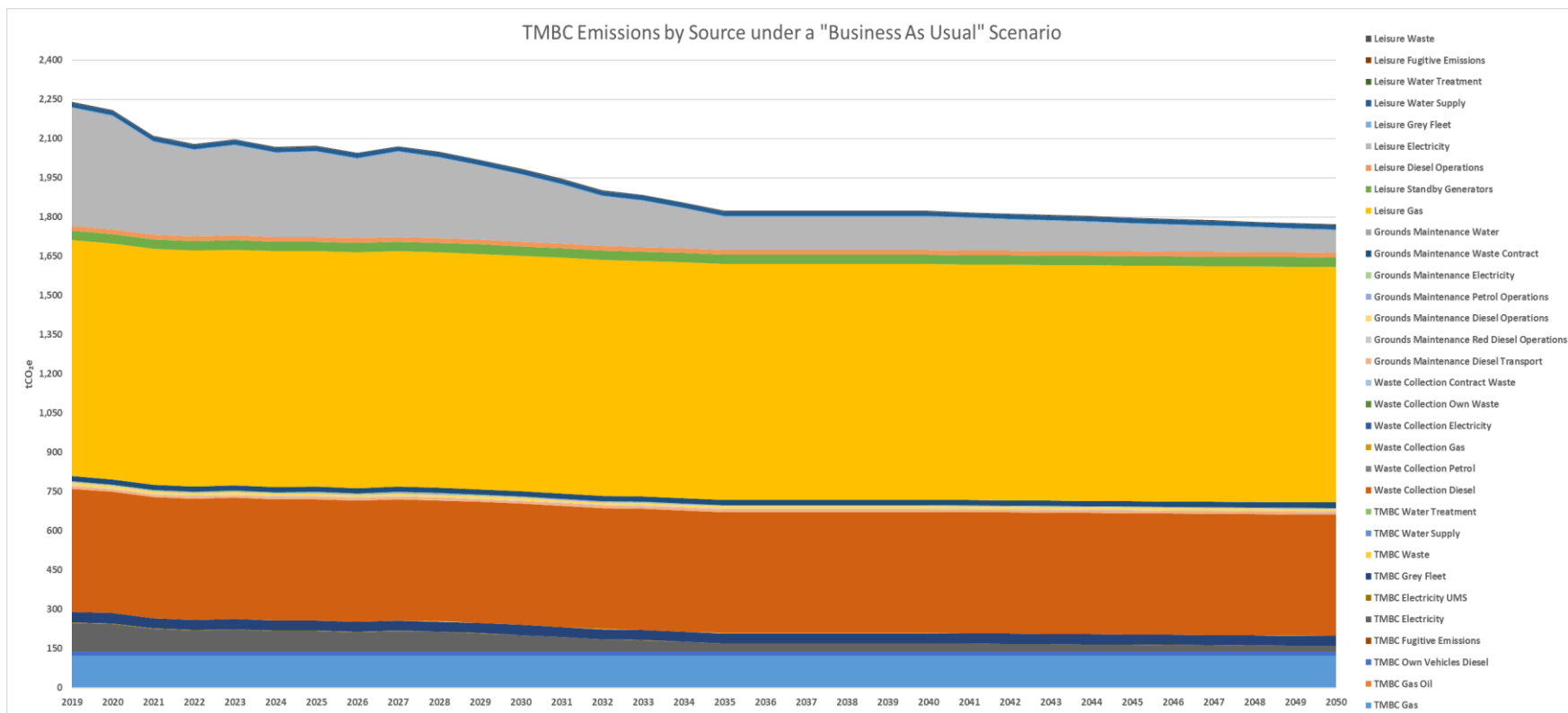


External
Organisations /
Contracts
1,950.1
87%

Transport Fuel Use



BAU Forecast to 2050



Emissions by 2050: 1,772.50 tCO₂e

- **Highlights**

- Leisure contract electricity
- Leisure contract gas
- Waste contract diesel for vehicles
- Own estate gas

Points of note

- TMBC's own estate makes up 13% of the overall footprint
- Electricity and gas make up a large and similar proportion for associated emissions
- Leisure contract contributes significantly to the carbon footprint due to gas usage
- Emission reduction for BAU forecast between 2020 & 2035 is largely due to forecasts around electricity generation becoming cleaner
- Gas emissions remain largely static based on current long-term forecasts